

# High Security Locking Solutions for the Petrochemical Industry



# Corporate Statement

Abloy Oy is one of the leading manufacturers of locks, locking systems and architectural hardware and the world's leading developer of products in the field of electromechanical locking technology.

**ABLOY®** is an ASSA ABLOY Group brand. ASSA ABLOY is the world leader in door opening solutions, dedicated to satisfying end-user needs for security, safety and convenience.



# Corporate Profile

Abloy Security has been satisfying security needs for customers in Transportation, Public Utilities, U.S. Government, Casino Gaming, Vending, Parking Meters, OEM, Locker and Payphone markets across North America since 1974.

Abloy Security provides a full range of locking product solutions designed to satisfy customers' most demanding applications.



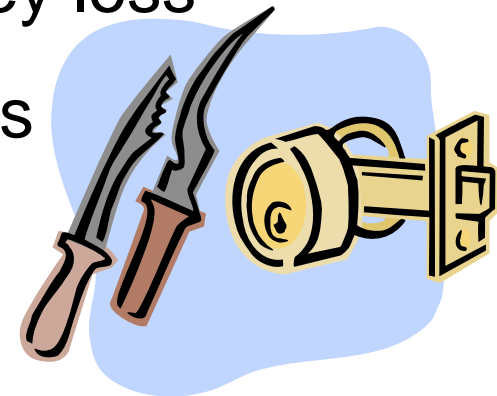
# The ABLOY® Difference

- ▶ Maximum Security
- ▶ Accountability
- ▶ Performance
- ▶ Patented & Restricted Keyways



# Maximum Security

- ▶ Exceeds ASTM standards for physical attack
- ▶ Virtually pickproof
- ▶ Key-retaining feature prevents leaving site before re-locking
- ▶ Re-keyable in the event of key loss
- ▶ Controls unauthorized access



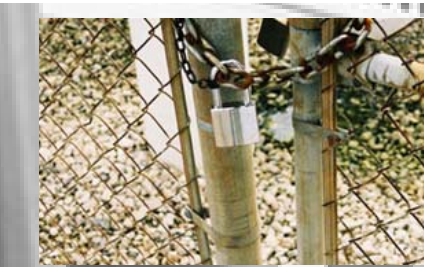
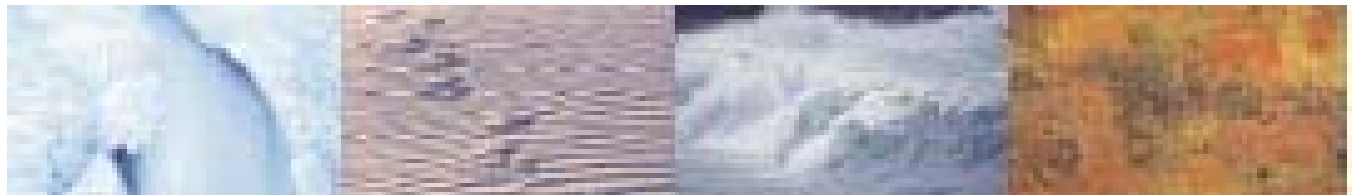
# Accountability

- ▶ Over 360 million key codes; each used only once
- ▶ **ABLOY® EXEC** keys are highly restricted, patent protected and use exclusive factory restricted key profiles to prevent any attempts at unauthorized key duplication
- ▶ Maintain key records for each customer
- ▶ Minimize losses due to theft or maintenance expense



# Performance

- ▶ Unique materials and surface treatments guarantee corrosion resistance of both visible parts and internal parts
- ▶ Spring-free construction
- ▶ Extremely user friendly, effortless operation



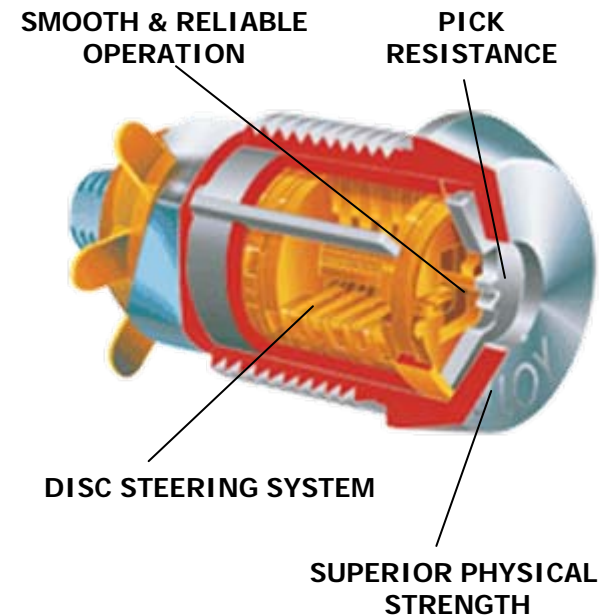
# Key Control

- ▶ Millions of key code combinations
- ▶ Patent Protected - **ABLOY® EXEC** key blanks
- ▶ Extensive master keying capabilities
- ▶ Strict key control policy eliminates unauthorized key duplication
- ▶ Extensive key records support internal audits



# ABLOY® EXEC Design: Rotating Disc Cylinder

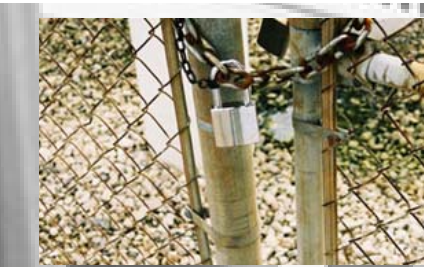
- ▶ No springs to wear, weaken, rust or freeze
- ▶ Virtually pickproof
- ▶ Exclusive key design
- ▶ Key retaining while unlocked
- ▶ Re-keyable when keys are lost or stolen



# ABLOY® Locking System

Includes full line of Maximum Security products:

- ▶ **ABLOY®** Padlocks
- ▶ **SHUT-OUT®** Heavy Duty Puck Lock and Hasps
- ▶ **ABLOY®** Door Locks
- ▶ **ABLOY®** SMARTDISC – Electro-mechanical Locks (memory in the key)



# ABLOY® Padlock Series

## Features:

- ▶ Maximum resistance to physical attack (exceeds ASTM standards)
- ▶ 25, 50 & 100mm shackle clearance
- ▶ Key retaining; re-keyable cylinder
- ▶ Environmentally durable, corrosion resistant
- ▶ Lifetime Functional Warranty



## Applications:

- ▶ Access control
- ▶ Perimeter fencing & gates
- ▶ Shut-off valves, pump & control stations
- ▶ Transportation & Delivery



# Forced Entry Protection

- ▶ Case hardened steel protective discs
- ▶ Case hardened steel lock housings
- ▶ Case hardened boron steel padlock shackles
- ▶ Stainless steel locking ball mechanism
- ▶ Heel & toe locking for shackles



# ***SHUT-OUT***® Heavy Duty Puck Lock

- ▶ Houses an **ABLOY**® EXEC cylinder with over 4,000 pounds of pull strength
- ▶ Solid, machined steel lock housing protects the concealed shackle and lock cylinder
- ▶ Extra thick, case hardened steel face and anti-drill disc protects cylinder's internal components
- ▶ Designed to be used with the ***SHUT-OUT***® Puck Hasp



## **Applications:**

- ▶ Transportation & delivery
- ▶ Access Control



# SHUT-OUT® Hasps

- ▶ Maximum security – models designed to protect padlocks or puck locks from prying and physical attack
- ▶ Corrosion resistant – body made of cold rolled steel.
- ▶ The hasp is designed to protect the lock, yet is easily accessible by authorized employees

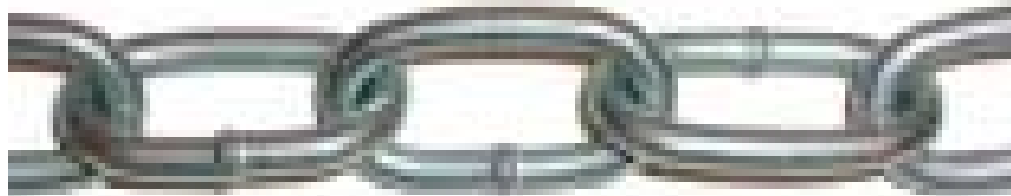
## Applications:

- ▶ Wide variety of use with padlocks and puck locks



# Padlock Chain Options

- ▶ Memory chain attachment options are available with **ABLOY**® Padlocks, ensuring the padlock stays close and available when unlocked
- ▶ There are standard 12" and 18" memory chain attachments available
- ▶ Maximum Security Fed. Spec. chain available to complement your **ABLOY**® padlocks



# ABLOY® Door Locks



## Features:

- ▶ Padlocks and facility door hardware can be on the same keyway
- ▶ Retrofit cylinders
- ▶ Extensive selection
  - ▶ Door handles
  - ▶ Pulls
  - ▶ Escutcheons
  - ▶ Window handles
  - ▶ Maintenance areas

## Applications:

- ▶ Facility doors
- ▶ Cabinets
- ▶ Storage areas



# ABLOY® SMARTDISC



The new **ABLOY® SMARTDISC** technology revolutionizes industrial locking by combining proven mechanical locking solutions with electronics.

- ▶ A new level of physical security
- ▶ Flexible system allows management design & controls
- ▶ Enhances internal accountability
- ▶ Unique key codes for every lock
- ▶ Records date, time, users and more



# Lifetime Functional Warranty

If an **ABLOY®** PL Series Padlock malfunctions due to:

- ▶ Environmental Conditions
- ▶ Defects in Manufacturing
- ▶ Wear and Tear

We will repair or replace **ABLOY®** PL Series Padlocks at **NO-CHARGE!**



# The Logical Choice for your Security:

- ✓ Maximum Security Solutions
  - ✓ Maximum ROI
- ✓ Maximum System Flexibility
- ✓ Maximum Management Control
  - ✓ Maximum Service Levels





# Contact us for more details

**Call: 1-800-367-4598**

**E-mail: [info@abloyusa.com](mailto:info@abloyusa.com)**

**Visit our website: [www.abloyusa.com](http://www.abloyusa.com)**



**ABLOY SECURITY, INC.**



**6005 Commerce Drive, Suite 330**



**Irving, TX 75063**